

SKYWARN®

&

COLORADO ARES

Region 1 District 1



Revised 04/2023

ARES ROLE IN SKYWARN®

- Provides useful information to the National Weather Service (NWS)
- Aids in learning and teaching more about local weather (WX)
- Potential to save lives and property
- Community involvement
- Mobile radio operations
- Amateur Radio Net procedures

BASIC INFORMATION

RULE #1

SAFETY!!!

There is nothing you can do in storm spotting that is worth getting hurt or killed for.

RULE #2

Skywarn® Spotters are **NOT** Storm Chasers!!!

RULE #3

Go back to Rule #1

SPOTTER

Field WX Researcher- Primary goal: provide accurate reports of observed weather and related conditions for the National Weather Service and Public Safety.

CHASER

Primary goal is for-profit photography/videography.



WX NET REPORTING STRUCTURE

LOCAL WX NET

During times of severe weather watches and warning ARES will start either a Standby or Active WX Net on the pre-determined local repeaters.

(see ICS-217A for frequencies)

WX NET CONTROL STATIONS

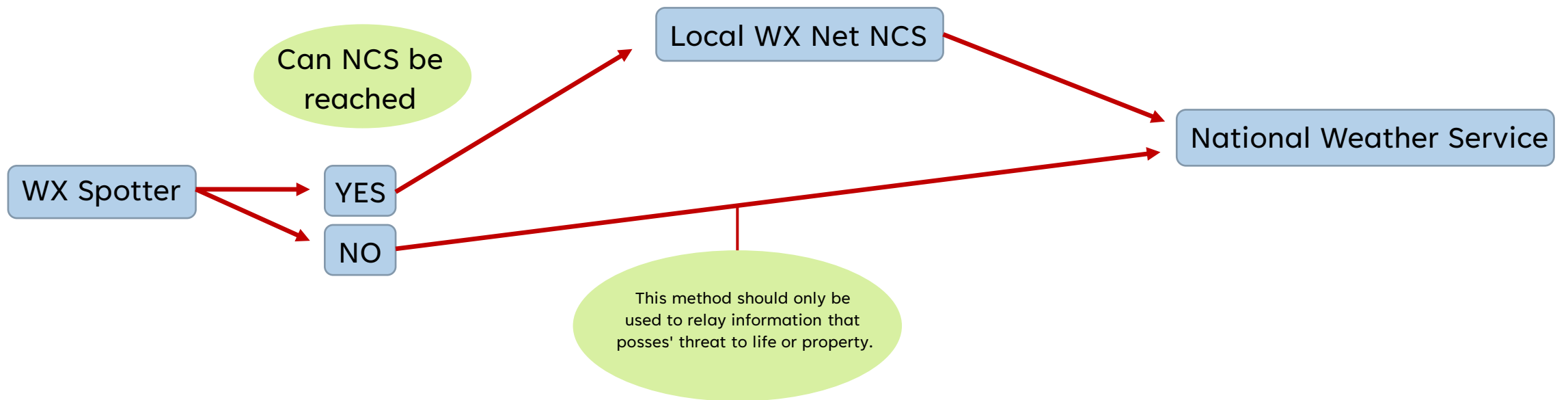
Net Control Stations (NCS) is generally a pre-determined list of amateur radio operators that is published on the CO ARES R1D1 website. The NCS operators

Will take reports from spotters in the field and relay vital information to NWS either via radio, phone or internet reporting.

SPOTTERS

WX Spotters are those of you that are in the field reporting WX information to the NCS on the local WX Net. This can be from your home location or mobile operations. However Mobile spotters take priority on delivering WX information to the NCS.

REPORTING STRUCTURE DIAGRAM



WEATHER NET CONDITIONS





STANDBY NET

WHEN TO START

- Severe weather approaching from adjacent areas.
- Severe Weather Watch issued for our areas.
- Warning issued but no spotters in the field.
- Warning expires but Watch continues.

THINGS TO REMEMBER

- Take Check-ins from ALL reporting stations.
- If conditions change and there are spotters in the field, advance to Active WX Net.
- Normal repeater traffic is permitted during Standby Net operations.



ACTIVE WX NET

WHEN TO START

- Active Severe WX or Severe WX Warning posted.
- Spotters are active in the field with WX Warning issued in the area.

THINGS TO REMEMBER

- Repeater is restricted to WX Net traffic, all others should be encouraged to switch to a different repeater/frequency.
- Spotter location should be tracked but portable/mobile operators take priority, unless a home location has immediate threat from severe WX.

WX NET OPERATIONS



ETIQUETTE

- Use plain language ONLY!
- Always listen first and follow the NCS' instructions.
- Plan your transmission and DO NOT editorialize on the Net.

CHECKING INTO THE WX NET

- Identify using your entire Amateur Radio Callsign ONLY with Standard ITU Phonetics.
- Wait for NCS to respond to your call and listen for the information they need.
- Reply with only the information that has been requested.
- Be short and concise with your transmission, remember the NCS may be dealing with a lot of traffic, and they can only write so fast.

WX NET OPERATIONS



AFTER CHECKING IN

- ALWAYS listen, as the NCS may call for you at any time.
- Tactical Callsigns should be used.
(Tactical in – FCC out)
- Remember to keep information to the point with NO editorializing.
- Talk only as fast as you can write, as that is what the NCS must do.

TACTICAL CALLSIGN USAGE

- A tactical call sign is the suffix of your callsign. If your callsign only has a single suffix, then use the number and following letter.
- Use your tactical callsign to get ahold of NCS to start a communication, and ALWAYS end your final transmission with your full FCC callsign.

WX NET OPERATIONS



EMERGENCY/PRIORITY TRAFFIC

- If you have Emergency or Priority traffic, simply call NCS by stating: “Tactical” Priority Traffic, or “Tactical” Emergency Traffic.
- Doing this informs the NCS that important traffic needs relayed and will give you priority over all other traffic.
- Always be to the point with your information
- Always give your location as exact as possible.
- Always inform if measuring instruments were used or estimated.
- Remain calm, Emergencies can be stressful so remember when calling to push the PTT, take a breath and then start talking.

WX NET OPERATIONS



WHAT TO REPORT

- Tornadoes, Funnel Clouds, Wall Clouds.
- Hail size of 0.5" in diameter or larger.
- Winds with a sustained speed of 50 mph or higher.
- Wind gusts exceeding 58 mph or greater.
Preferably Measured
- Heavy Rainfall and or localized flooding.
 - 1" rain per hour or greater for urban areas
 - 1.5" rain per hour or greater for rural areas
- Significant damage (trees, crops, structures, etc.).
- Downed power lines.
- Moderate to Heavy snowfall.
- Significant hail or sleet accumulation that can impact road conditions.
- River or creek flooding.
- Flash flooding.
- **Remember to report the WHERE, WHAT and WHEN!**

KEEP REPORTS BRIEF AND CONCISE

- Keep your words to the minimum needed to relay accurate information.
- AVOID vague language or unnecessarily long descriptions.

Examples:

What NOT to Use- I see rotation approximately five miles to my east. I am approximately 10 miles north of Nunn and it's getting windy, and temperature is dropping.

What to Use- My Location is Weld County Rd 104 and Hwy 85, there is rotation approx. 5 miles east, wind is east at 60 mph, temp. is 76 measured.

CORE PUNCHING

WHAT IS CORE PUNCHING?

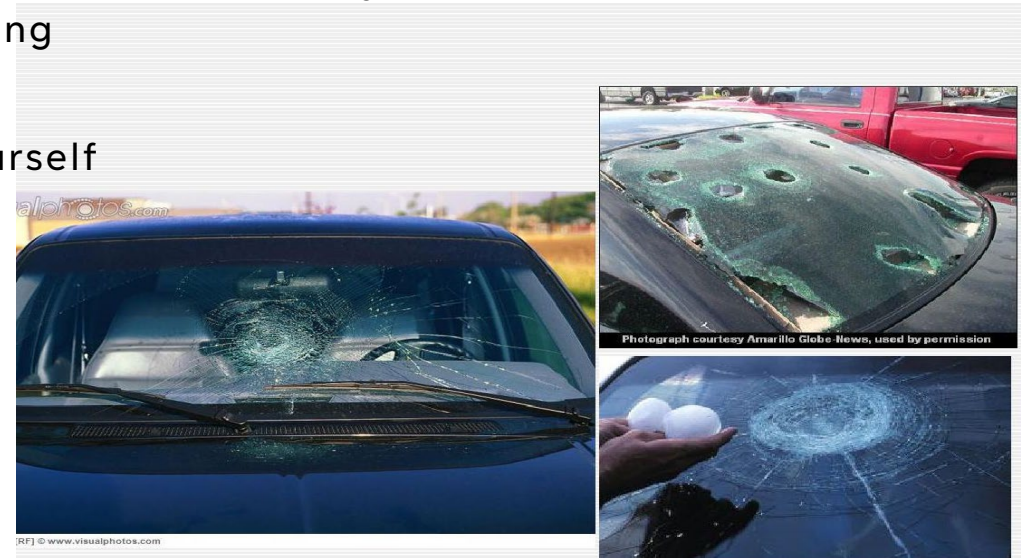
Core Punching is intentionally driving into the center of the storm or cell.

DON'T DO IT!!!

Remember we are spotters not chasers and our main goal is to report conditions by observing from a SAFE distance. The SAFETY of the public and ourself is our top priority.

REASONS NOT TO CORE PUNCH

Field WX Researcher- Primary goal: provide accurate reports of observed weather and related conditions for the National Weather Service and Public Safety.





THANK YOU

Jim Dixon
Callsign KA6ETE
Spotter # LA866

Colorado ARES Region 1
District 1 Emergency
Coordinator

www.coaresr1d1.org

